

RELIANCE

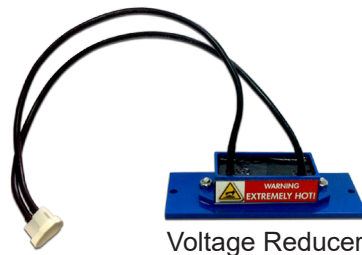
POWER PARTS

13-068

16V to 12V Voltage Reducer Installation Instructions

INCLUDED:

Voltage Reducer
Wiring Harness
2 Self Tapping Screws
Male Bullet Connector



Voltage Reducer

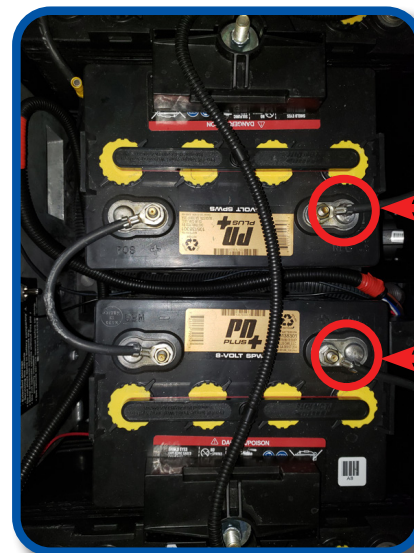


Wiring Harness

Be sure your golf cart is switched off, and if the cart has a RUN/TOW switch, it is in the TOW position. Disconnect the main battery negative cable.

The reducer uses two batteries connected to each other (in series) that produce 16 volts. Use a multimeter to confirm your connection is 16 volts.

Note: The Voltage Reducer only attaches to the Ground black wire of your light kit. The Power wire connects only to the 16v+.



(-) Negative Connection

(+) Positive Connection

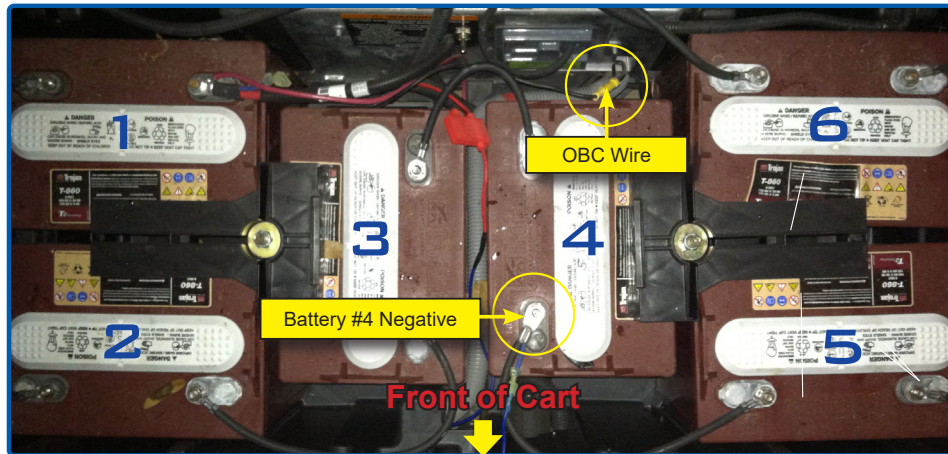


Determine where you want mount your reducer (ensure the pigtail harness will reach). Be sure to attach the voltage reducer to metal as the reducer gets hot and can potentially melt plastic.

A) Connect the wire with the 2 way standard butt terminal to your light harness black (negative) wire.

B) Connect the wire from the reducer with the ring terminal to the negative terminal of the selected pair of batteries.

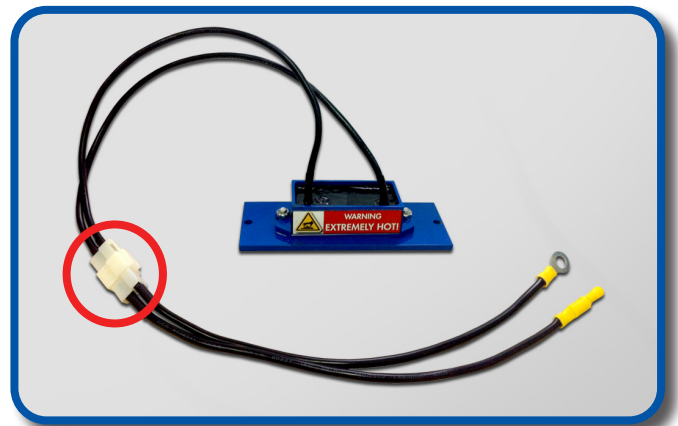
C) Connect the positive wire from your light kit harness (it will have an inline fuse) to the positive terminal of your selected pair of batteries.



For Precedent installation only. Cut the ring terminal end off of the **reducer harness** and attach the supplied male bullet connector. Then connect it to the black wire coming from the OBC as shown above. Attach the male bullet connector from the black wire of your bucket harness to the female bullet connector from the reducer harness.

Connect the Blue wire from the bucket harness to the **Negative** post of Battery #4 as shown, this will give you 16volts.

After the voltage reducer has been mounted and all the wiring from step 3 or 4 (Precedent) is complete, connect the voltage reducer harness to the reducer as shown. Then replace and tighten the negative terminal on your battery pack.



INSTALLATION COMPLETE