

Light Kit Standard 8300~8301 Electric Premium~8302 Gas Premium

Standard Light Kit:

2 Headlights 8064
2 Taillights 8065
1 Light Harness 31436
1 Light Switch 2457

Premium Electric Light Kit:

2 Headlights 8064
2 Taillights 8065
1 Light Harness 31436
1 Light Switch 2457
1 Horn 2488
1 Turn Signal Head 6439
1 Brake Switch 730
2 Screws 11835-00978
2 Nylocs LK-5
2 Wire Eyelets 60032
1 Set Templates
1 Diagram
1 Brake Switch Bracket 31439

Premium Gas Light Kit:

Same As Electric Except:

1 Brake Timer 6438T
2 Screws 6438S

Remove floor covering and dash. Route harness through dash area to lights avoiding interference with any moving parts. Route main harness rear half through center of car rear body front section where the cars main harness is routed. Tie a single wire to light harness to help feed through the channel area. Route the taillight half harness as not to interfere with any moving parts.

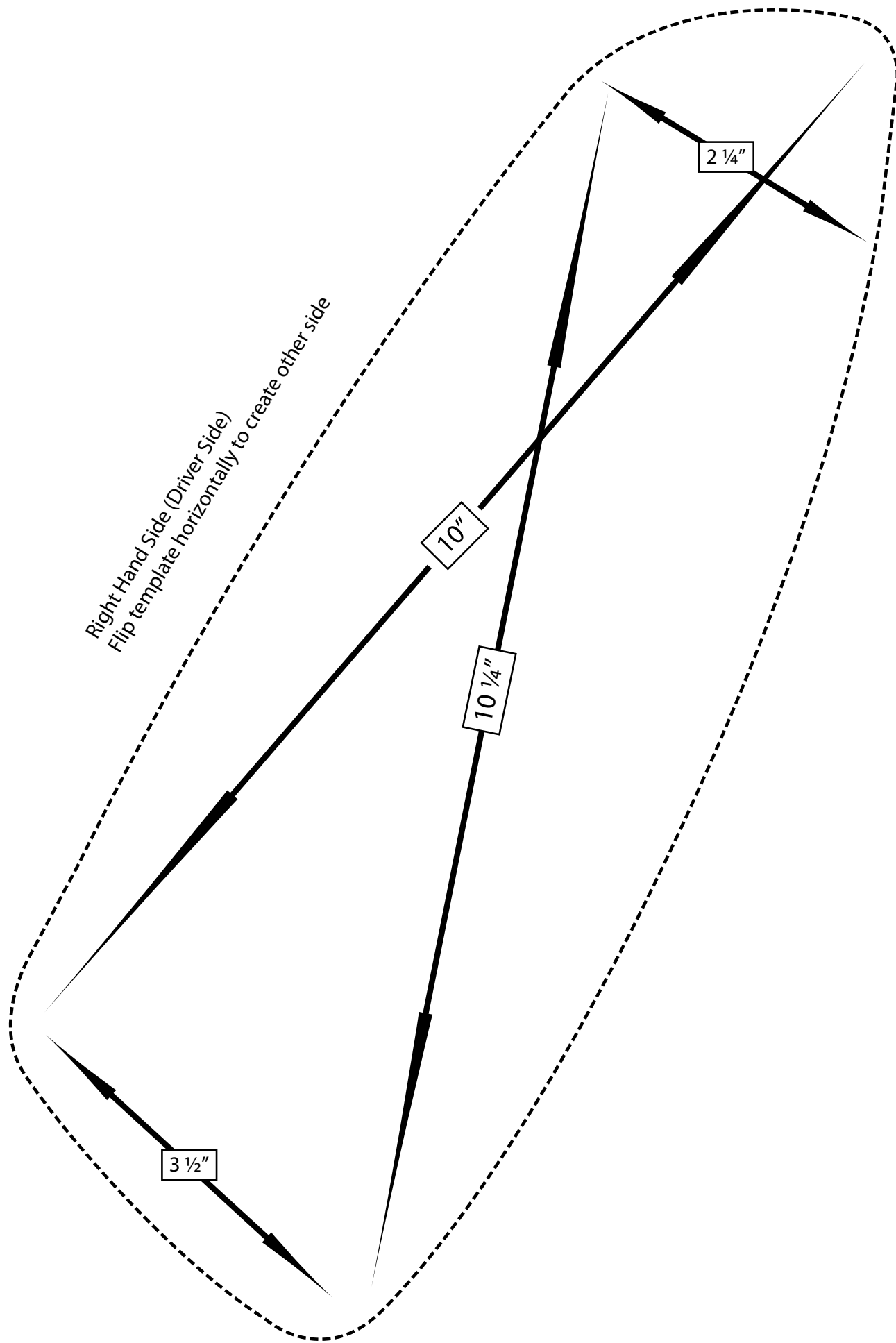
Select an area on the dash for convenient mounting of light switch so the switch wires will reach. Light switch wires are the blue and red ones with .250 female faston connectors. Purple and black wires with .250 faston female connectors are for horn connection. The 9 pin Molex connector is for part number 6439 turn signal head for direct plug and play. The yellow, red and black wires are use for brake light circuit. The long red and black single wire in the center half of harness is for 12 volts negative and positive to the light kit system. The fuse assembly will connect to the main positive red wire connector. Note: you will notice a wire color change on both taillights use wiring diagram as a reference. The white wire on taillights is negative and lines up with harness connector black wire. Red taillight wire will line up with blue harness connector. Black taillight wire will line up with white harness connector.

Brake Switch Mounting



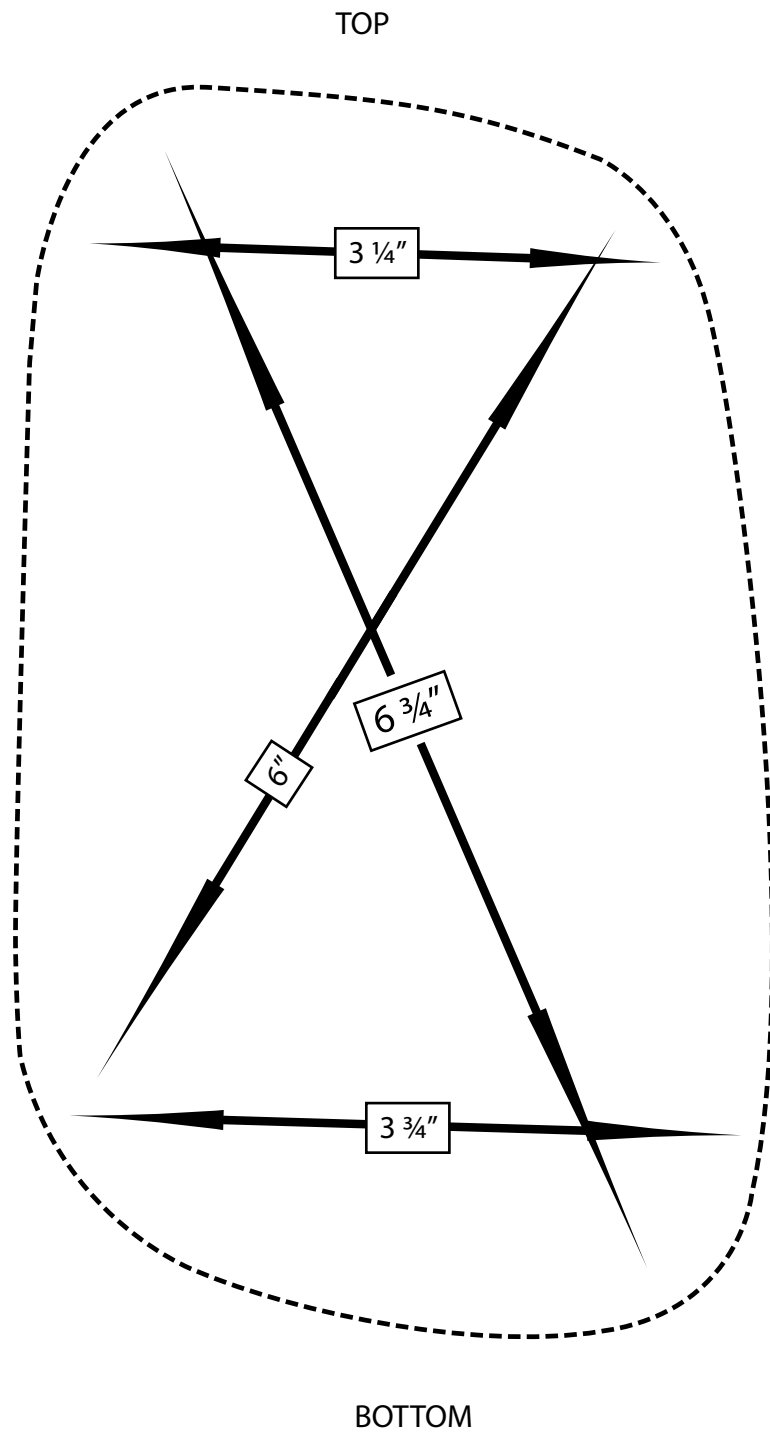
Tech Tip: some wire ends may need to be changed due to vendor design change. Just add appropriate wire end to make switch connections.

For gas cars mount the 6438T timer kit in same area and the black negative wire is used for the timer. Electric cars will not use this black wire. Note: do not use the cars existing brake relay with this kit as it is not designed for that.



Driver's Side Template

Flip template horizontally to create other side



RXV Lights



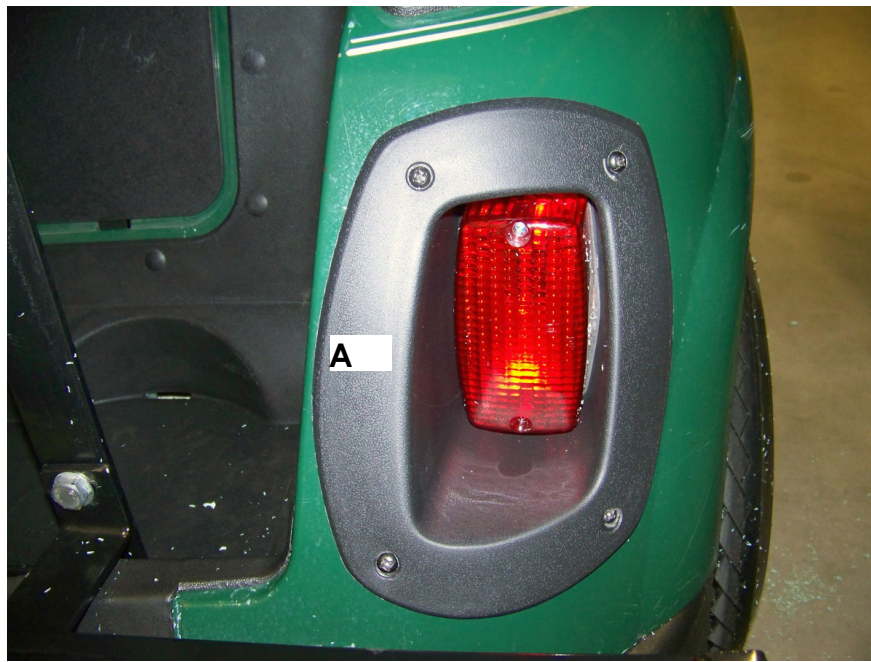
C = From Body Edge Up $\frac{7}{16}$ "

B = From Body Edge Up $\frac{5}{8}$ "

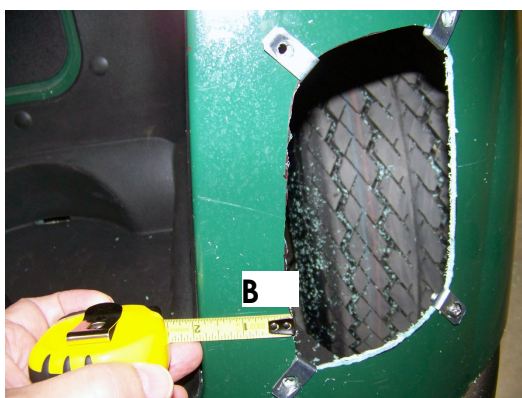
A = From Edge Of Decal $1 \frac{3}{4}$ "

This is only a guide line and +/- is per application. Set the templates in place and tape to body. Use the measurements as a guide, then back off from the car and visualize the alignment. A lot of light kits are a visual thing, so look before you cut.

RXV Taillight Placement



1 3/4 To 2"



1 3/4 To 2"



3 3/8 To 3 1/2"

Cut template out and set in place 1 3/4 to 2" from bagwell area (B). From the bottom using the bumper line measure up 3 3/8 to 3 1/2" (C). By moving closer to 2" (B) you will have more body shown at (A). The light bezel is very flexible and will draw down.

RXV Light Harness 31436 (8300~8301~8302 Kits)



Caution! Make Sure
Of Final Connections!

