

E-Z-GO RXV 4-Passenger Flip Flop Seat Kit Installation Instructions



Caution: wear appropriate eye protection during installation!

1. Remove front seat back cushion using Torx tooling; save hardware.
2. Remove sweater basket; disconnect canopy supports from seat back brackets and prop rear of top.
3. Remove access panel; save hardware.
4. Remove seat back support brackets and rubber boots; save hardware.
5. Remove 2 bolts from bottom of bagwell area; save hardware.
6. Install new support boots and new seat back brackets using existing hardware from step 4; **do not tighten.**
7. Attach rear canopy supports to seat back brackets using existing hardware.
8. Attach front seat back cushion to seat back brackets using existing Torx hardware. Tighten all hardware.
9. Install access cover removed in step 4. Assembly should look like **figure 1**.
10. Install vertical support bracket into bagwell using hardware removed in step 5 (**figure 2**).
11. Install flip flop frame to rear seat back brackets (**figure 3**). Use hardware bag #1. M10-1.5x50 hex bolts, washers, and nuts. **Do not tighten.**
12. Attach vertical support bracket to flip flop frame (**figure 4**). Use hardware bag #2. M10-1.5x25 hex bolts, washers, and nuts. **Do not tighten.**
13. Attach footplate to the vertical support bracket (**figure 5**). Use hardware bag #2. M10-1.5x25 hex bolts, washers, and nuts. **Do not tighten.**
14. Attach hand rails to flip flop frame. Use hardware bag #3. M10-1.5x50 phillips truss head bolts, washers, and nuts.
15. Attach hand rails to footplate using hardware bag #4. M10-1.5x70 hex bolts, washers, and nuts. **Tighten all hardware previously left loose.**
16. Attach rear seat back cushion to seat back bracket using hardware bag #5. M6-1.0x45 hex bolts with washers.
17. Install seat back bracket with cushion between hand rails (**figure 6**). Use hardware bag #6. M8-1.5x50 phillips head bolts, washers, and nuts.



figure 1



figure 2

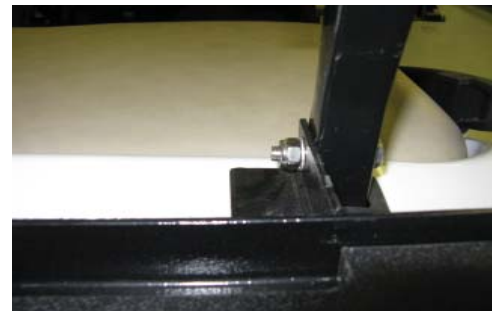


figure 3



figure 4



figure 5

18. Install rear seat bottom cushion. Center cushion left to right on frame and attach using wood screws from hardware bag #6.



figure 6

Bill of Material

- (2) rear seat supports-driver and passenger
- (2) rear seat support boots
- (1) vertical support bracket
- (1) flip flop frame
- (1) footplate
- (2) handrails
- (1) rear seat back bracket
- (1) rear seat back cushion
- (1) rear seat bottom cushion
- (1) box of hardware
- (1) instructions

Box of Hardware

- (2) M10-1.5x50 hex bolts
- (4) M10-1.5x25 hex bolts
- (4) M10-1.5x50 hex bolts
- (2) M10-1.5x70 shoulder hex bolts
- (24) M10 washers
- (12) M10-1.5 nyloc nuts
- (4) M6-1.0x45 hex bolts
- (4) M6 washers
- (4) M8-1.5x45 phillips head bolts
- (8) M8 washers
- (4) M8-1.25 nyloc nuts
- (8) M5.5x38 wood screws