

FFEZ2B***BLK FOLDING REAR CARGO SEAT

1994-2005 EZGO Medalist/TXT model golf cart



BUGGIES
UNLIMITED

Installation Instructions

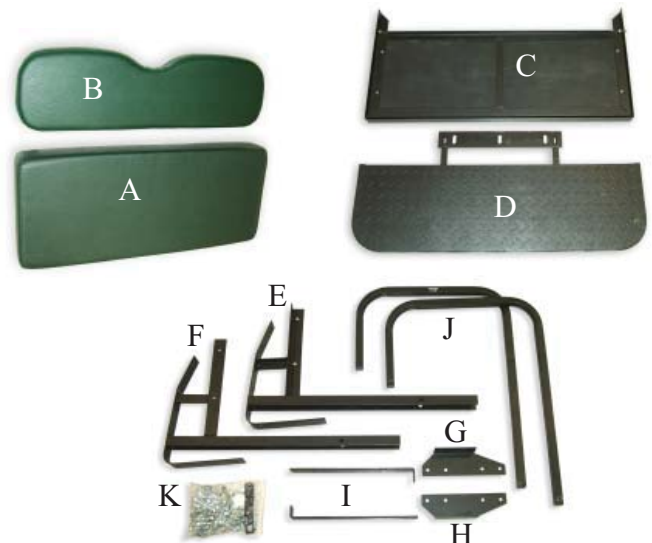
Thank you for purchasing our exclusive **Buggies Unlimited** 'Flip-Flop' Folding Rear Cargo Seat Kit. We take great pride in our products and feel certain that this package will offer you many years of trouble-free service. We ask that you take a moment to read these instructions completely before beginning your installation. Familiarity with the parts and an understanding of the installation procedures will ensure that your installation goes smoothly and safely. Additionally, it will give you an opportunity to determine if your cart might have any damaged, corroded, or missing parts which will need replacing prior to using your new Folding Rear Cargo Seat Kit.

About This Folding Rear Seat Kit

This Folding Rear Cargo Seat kit is designed specifically for 1994-2005 EZGO Medalist/TXT model golf cart. If you are unsure of your golf cart type, please see our catalog or contact our technical department, toll free a 1-888-444-9994, or online at www.buggiesunlimited.com. During the installation of this kit you will be replacing the seat back supports and removing the rear bumper from your golf cart and replacing them with components in our Folding Rear Seat Kit. You should allow about 2 hours for installation.

Parts Included In Our Kit

Item	Qty	Description
A	1	Seat Base Cushion
B	1	Seat Back Cushion & Cover
C	1	Folding Deck Assembly
D	1	Foot Rest Assembly
E	1	Seat Back Support, LH
F	1	Seat Back Support, RH
G	1	Rear Seat Back Bracket, LH
H	1	Rear Seat Back Bracket, RH
I	2	Deck Support Brackets
J	2	Rear Hand Rails
K	1	Hardware Kit, Pull Strap



Tools And Materials Required To Install Kit

- 1) SAE socket set, with ratchet and 6" extension.
- 2) SAE combination wrench set.
- 3) #3 Phillips and Flat Tip screwdrivers.
- 4) Drill and 3/32" drill bit.
- 5) Safety goggles/glasses



DISASSEMBLY



CAUTION: During this installation it is necessary for your personal protection that you wear safety glasses at all times. Remove the key from the cart, turn the tow switch to the tow position (if applicable) and disconnect the negative battery cable, to insure that it does not move accidentally during the installation of this kit.

Buggies Unlimited
1-888-444-9994
www.buggiesunlimited.com

© Copyright 1997-2008 Buggies Unlimited. All Rights Reserved.

- 1) Remove the top from the cart, by removing the bolts, nuts and washers connecting the top supports to the top canopy.
- 2) Remove the seat bottom by lifting it off it's hinges and set it aside.
- 3) Remove the rear top supports from the bag rack assembly.
- 4) Remove the seat back/bag rack assembly from the chassis by removing the 4 bolts securing it (2 on each side). See Fig. 1.

SEAT/DECK INSTALLATION

- 1) Place the rear footrest up under the rear frame, and align with the existing holes in the bag well area. Use the 7/16" X 2 " bolts in the center three holes. Before inserting the outside two bolts, you might need to enlarge the bolt holes slightly in your cart by running a 5/16" drill through them. Then place the Cargo Deck Support Brackets into the bag well area and insert the longer 2 1/2" bolts through them. ONLY finger tighten the Cargo Deck Support Brackets at this time. See Fig. 2. You will need the following hardware:

2	5/16 X 2 1/2" Bolts
3	7/16 X 2" Bolts
4	5/16" Flat Washers
6	7/16" Flat Washers
2	5/16" Nylon Lock Nuts
3	7/16" Nylon Lock Nuts

- 2) Install the new seat back supports using 4 bolts, through the mounting holes on each bracket. ONLY finger tighten hardware at this time. See Fig. 3. You will need the following hardware:

4	3/8 X 1" Bolts
4	3/8" Flat Washers

NOTE: Be sure the right support is located on the passenger side and the left is installed on the drivers side. Look closely at these brackets in figure 3.

- 3) Mount the seat back supports to the deck supports positioned in the bag well. ONLY finger tighten hardware at this time. You will need the following hardware:

2	3/8 X 1" Bolts
4	3/8" Flat Washers
2	3/8" Nylon Lock Nuts

- 4) Place the Folding Deck Assembly (in the closed or folded position) onto the rear of the vehicle, with the hinged portion to the rear, then open the deck out flat in place. Install the mounting hardware but ONLY finger tighten at this time. See Fig. 4.

NOTE: Washers are used only on the underside.

Use the following hardware:

4	5/16 X 1" Hex Socket Screws
4	5/16" Flat Washers
4	5/16" Nylon Lock Nuts

- 5) Install the Rear Hand Rails to the Rear Deck Assembly and to the Footrest Assembly, using the following hardware:

4	5/16 X 1 1/2" Bolts
2	5/16 X 2 1/2" Bolts
12	5/16" Flat Washers
6	5/16" Nylon Lock Nuts

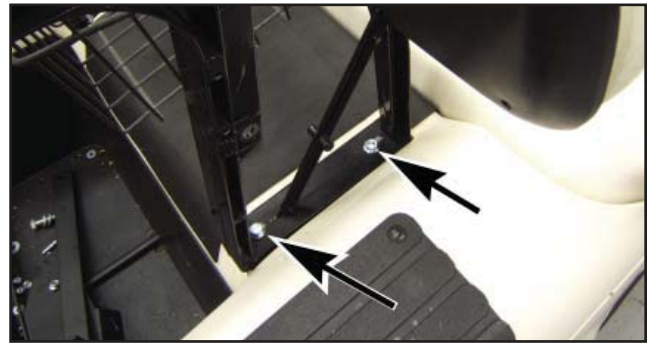


Fig. 1 - Remove Bag Rack/Seat Back Assembly

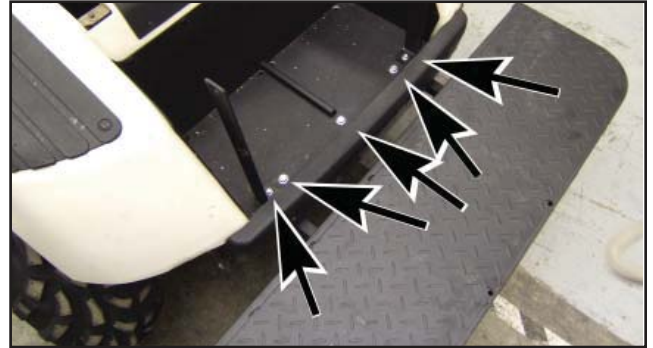


Fig. 2 - Install Foot Rest & Deck Supports

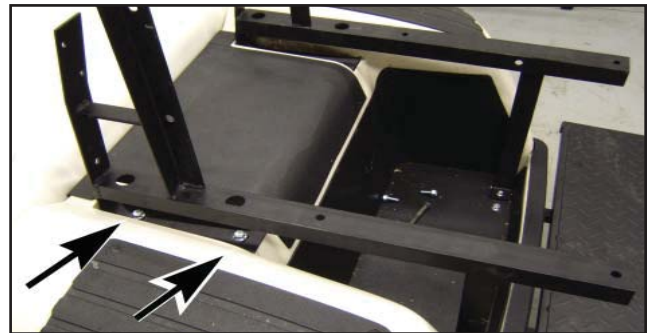


Fig. 3 - Install Seat Back /Deck Supports

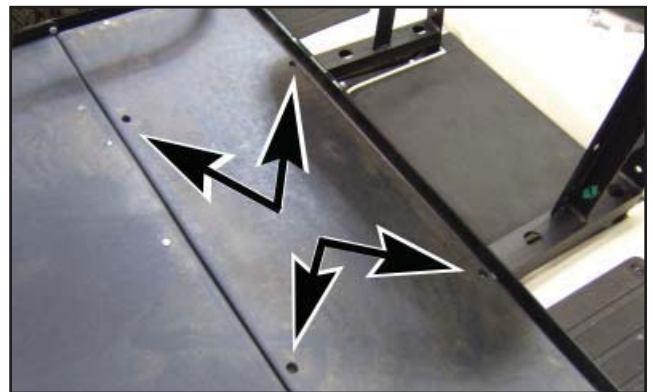


Fig. 4 - Install Deck Bolts

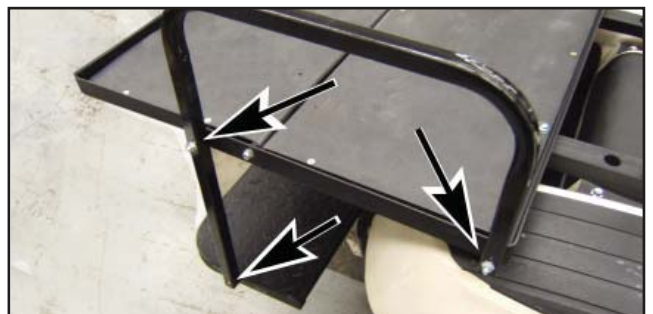


Fig. 5 - Install Hand Rails

The top 2 bolts on each side of the Deck Assembly must be installed from the inside - out leaving the nut on the outside of the Hand Rail. The bolts through the Footrest must be inserted from the outside, with the nuts under the Footrest. For now, ONLY finger tighten hardware at this time. See Fig. 5.

- 7) Install the original front seat backrest, onto the new backrest support brackets. Use the original hardware.
- 8) Now its time to go back and tighten the hardware which has been left finger tight in previous steps. Tighten the hardware securing the Seat Back Support brackets to the frame, then the Rear Foot Rest Assembly and the Hand Rails. When the hand rail nuts are to be tightened, tighten them only until the bolt is flush with the outside of the lock nut. Lastly, tighten the Rear Folding Deck mount bolts and Deck Support Brackets to the Back Rest Support Brackets. Recheck to insure that all the hardware is tight.
- 9) Install the left and right Rear Seat Back Brackets (items G & H) onto the seat back supports. Look closely at figure 6 to assure they are correctly installed. You will need to install the rear top supports at the same time. If your cart was not equipped with a top, you will need to use the following hardware. ONLY finger tighten hardware at this time

4	5/16 X 1 3/4" Bolts
8	5/16" Flat Washers
4	5/16" Nylon Lock Nuts

- 10) Install the Seat Base onto the Folding Deck using the following hardware:

6	1/4 X 1 1/4" Wood Screws
---	--------------------------

With the Seat Base Cushion centered in place and resting against the lip at the rear of the folding section of Folding Deck Assembly, you will use a 3/32" drill to add 6 mounting holes (one at a time) through the bottom of the seat cushion. Use the existing holes through the Folding Deck Assembly as a guide for drilling.

- Lift the folding portion of the deck upright so that you can hold the seat cushion in place and drill through the underside of the deck.
- Drill the first hole in the center/top of the seat and install one screw. Be sure to add the pull strap between the seat base and the deck before inserting the screw so the screw will pass through the ring eyelet in the strap. See fig. 7.
- Drill the lower/center hole and install the screw.
- Drill one outside/top corner and install the screw.
- Drill one outside/lower corner and install the screw.
- Drill the opposite outside/top corner and install the screw.
- Drill the opposite outside/lower corner and install the screw.
DO NOT OVER TIGHTEN THE WOOD SCREWS.

- 11) Install the new rear facing seat back rest and back rest cover using the hardware listed below. See fig. 9.

4	1/4 X 1" Bolts
4	1/4" Flat Washers

- 12) Install the top canopy in the reverse order as was disassembled in step 1. Use the original hardware. Be sure to tighten the top and support/rear seat back brackets at this time.



Fig. 6 - Install Rear Seat Back Brackets & Top Supports

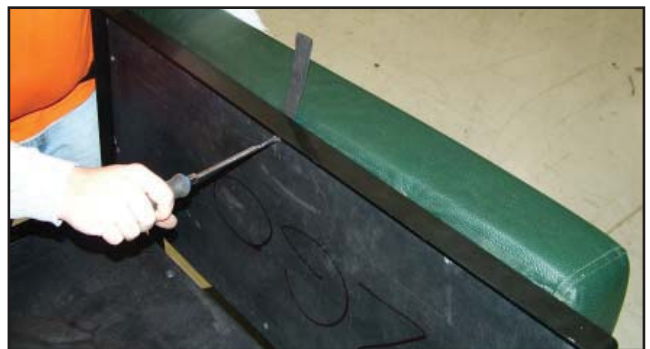


Fig. 7 - Install Rear Seat Base & Handle Strap



Fig. 8 - Install Front Seat Back Cushion

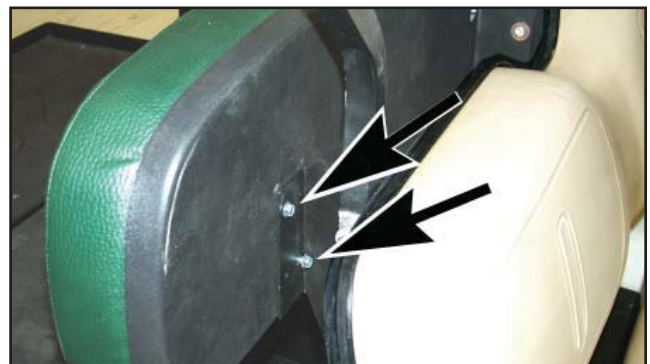


Fig. 9 - Install Rear Seat Back Cushion



BUGGIES
U N L I M I T E D

INDEMNIFICATION AND INSURANCE AGREEMENT

The Folding Rear Cargo Seat purchaser assumes sole and entire responsibility for, and shall indemnify and save harmless Mattison Avenue Corporation (d.b.a. Buggies Unlimited), from any and all claim, liability, responsibility, and damage, or any costs or expenses resulting from any loss of life or injuries or claimed injuries to persons or property that may be sustained in connection with the use of any product before or after purchase, including but not limited to Folding Rear Cargo Seat. The Folding Rear Cargo Seat purchaser also shall indemnify Mattison Avenue Corporation (d.b.a. Buggies Unlimited) and save Mattison Avenue Corporation (d.b.a. Buggies Unlimited) harmless with respect to any and all liability that may be incurred.

Golf carts are recommended for use only by those aged 16 and older. Golf carts can be especially hazardous to operate. Always remember that riding and alcohol/drugs don't mix. Never ride on public roads. Never carry more than 4 passengers (except shuttles and trams). Never engage in stunt driving. Avoid excessive speeds and be particularly careful on difficult terrain. Buggies Unlimited reserves the right, at any time, to discontinue or change specifications, prices, designs, features, models or equipment without notice and without incurring any obligation.

Buggies Unlimited
1-888-444-9994
www.buggiesunlimited.com

© Copyright 1997-2008 Buggies Unlimited. All Rights Reserved.