

# BSG EZ2 CHR & BSG EZ2 BLK

Brush Guard Installation Instructions  
for EZGO TXT (Medalist) 1994-2001.5



**BUGGIES**  
UNLIMITED

## Parts List

QTY	Description
-----	-------------

1	Brush Guard
1	Right Hand Mounting Arm
1	Left Hand Mounting Arm
4	5/16-18 x 3" Bolts
4	5/16-18 x 3/4" Bolts
16	5/16" Washers
8	5/16" Locknuts



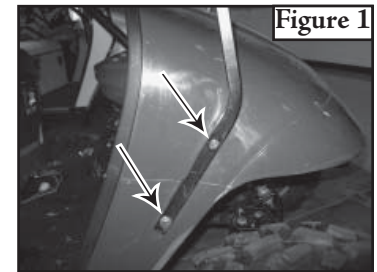
R.H.                      L.H.  
Mounting Arms



Shown with optional lights  
(not included)

 **Always remember to wear appropriate eye protection!**

1. Remove the existing top support bolts from body and discard (Figure 1). Retain the 1/2" round spacers.



Two bolts per side

**Note:** *It may be necessary to tap the existing holes with a 5/16" x 18 tap for the new longer bolts to fit.*

2. Slide the 3" bolts into the top and bottom holes making sure the round spacers are in place for the top two holes.
3. Place the brush guard mounting arms onto the bolts from the inside of the front cowl making sure the right and left hand arms are mounted on the correct sides. The flat side of the brackets facing outwards and the longer part of the leg points downward (Figure 2 & 3). You can now install the 5/16" washers and nuts to the mounting arms and hand tighten.
4. Install the Brush Guard with the slotted tabs on the outside of the mounting arms using the 5/16" x 3/4" bolts and nuts (Figure 4).
5. Securely tighten all hardware.

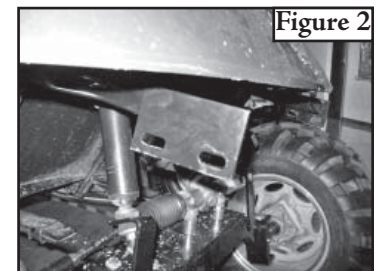


Figure 2



Figure 3

**Note:** *The Support Arm holes are slotted; the slotting is used to adjust the Brush Guard to the Front Body.*



Figure 4

Buggies Unlimited  
1-888-444-9994  
www.buggiesunlimited.com