

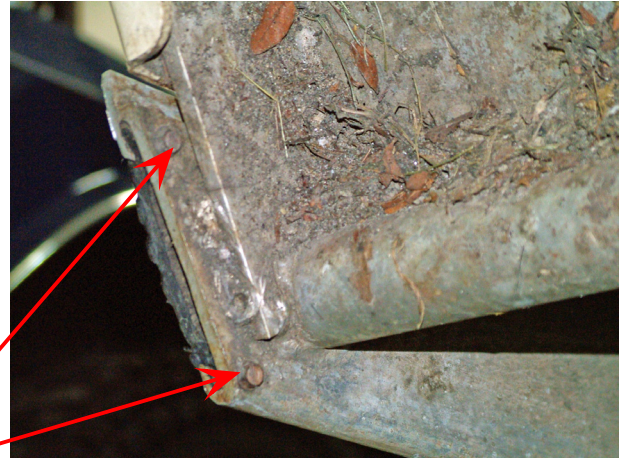


**RKP CC5 1002
and RKP CC5 SS
Rocker Panels**

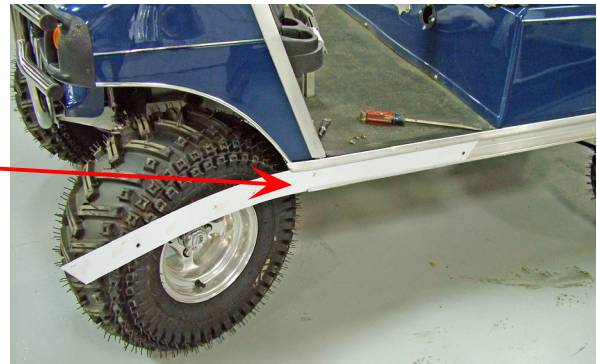


**Wear the appropriate
eye protection during
the installation!**

**Locate and remove
the four rubber insert
screws. Remove the
rubber insert.**



**Slide the new panel in
place. Depending on tire
size it may be necessary to
remove a tire to keep from
damaging the new panel.**



**Caution: Do not drill
into batteries or gas
tank! Look before you
drill.....**

**Once the panel is in place use
the existing panel holes as a
template. Drill the holes large
enough to accommodate a
5/16" bolt. Remove the
protective tape.**



**Tec Tip:
Remove the panel during
drilling to keep from
damaging the panel
surface.**

