

RELIANCE

POWER PARTS

18-103

EZGO RXV ALUMINUM BATTERY TRAY 12V TO 8V CONVERSION

INSTALLATION INSTRUCTIONS

We recommend professional installation. If you choose to not have this product installed by a professional, we highly recommend that you exercise caution, care, and patience when installing this product as it involves cutting the dash and an intricate installation process.

INCLUDED WITH KIT:

- Battery Tray
- Mounting Brackets
- Hardware Pack
 - 4 - 8 x 25mm Countersunk Bolts
 - 4 - 8mm Flat Washers
 - 4 - 8mm Nylock Nuts

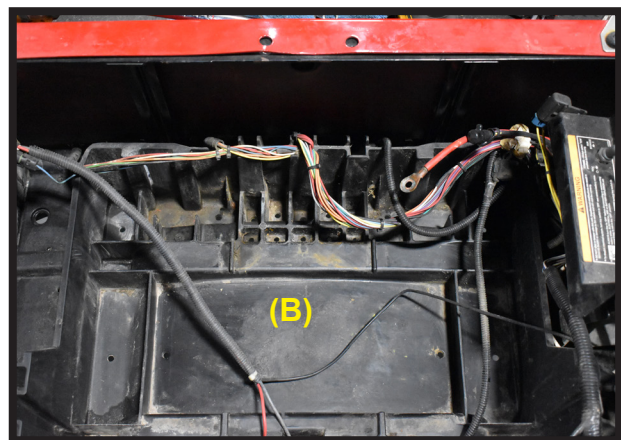
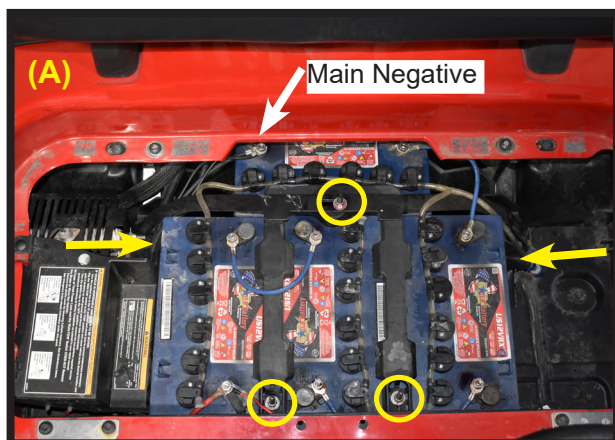
TOOLS NEEDED:

- #3 Phillips Tip
- T50 Torx Socket
- 15mm Socket
- 1/2" Socket
- 9/16" Socket
- 13mm Wrench
- Cordless Drill

Switch the key to OFF and place cart into TOW mode.

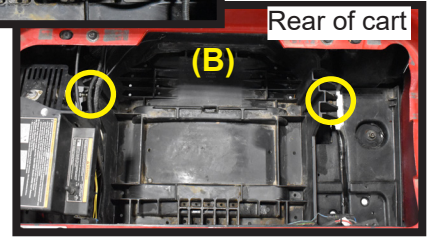
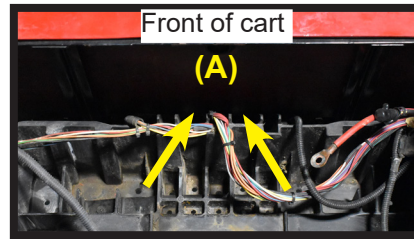
(A) Remove and discard the battery hold down bracket at the five locations marked with a 1/2" Socket and a T50 Socket. **Note: You will need to replace the factory battery hold down with aftermarket Rods & Hold downs that best fit your new 8v batteries.**

(B) Carefully remove your 12v batteries one at a time, first remove the Main Negative Cable using a 9/16" Socket. With main negative cable detached remove front 3 batteries then rear battery last.



Remove front bolts of factory tray **(A)** with a 15mm Socket. Remove the Torx Bolts **(B)** on each side with a T50 Torx Socket.

Only the front bolts will be reused for new tray.



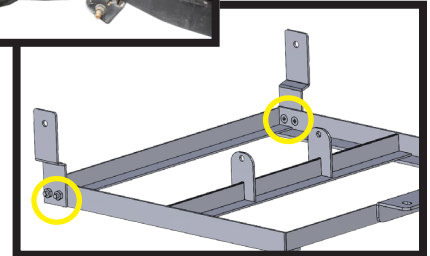
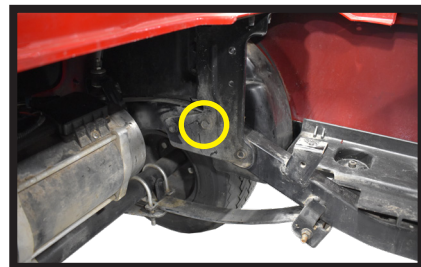
With batteries & bolts removed, lift tray from the front and pry front frame enough to allow tray to clear frame. Discard tray.



Temporarily remove the rear bolts shown in each side of frame with a 15mm Socket.

Attach the **Mounting Brackets** to the new **Battery Tray** as shown using a #3 Phillips Tip & 13mm Wrench. Bolts should be inserted from inside of tray and nuts on outside.

Note the Bracket orientation is on the outside with the bend going out as well.



Lower Tray into battery well vertically to allow Mounting Brackets to clear frame/body and then bring tray up from the bottom and into position.

Attach tray to the cart frame using the rear bolts from Step 4 and the front bolts from Step 2.

Note: Secure batteries with aftermarket battery rods and hold downs.

