



**LED LIGHT KIT**  
WILL FIT YAMAHA® DRIVE® G29  
INSTALLATION INSTRUCTIONS

**KIT CONTENTS:**

LED Headlights  
LED Tail Lights  
Light Kit Harness  
Mounting Screws  
Zip Ties  
Light Switch



**TOOLS NEEDED:**

#2 Phillips Tip  
Rotary Cutting Tool  
Sandpaper  
Power Drill

15/32" Drill Bit  
Marking Pen  
3mm Allen Wrench  
Plastic Rivet Removal Tool

Safety Glasses  
Tape  
Scissors

LED Headlights



LED Tail Lights



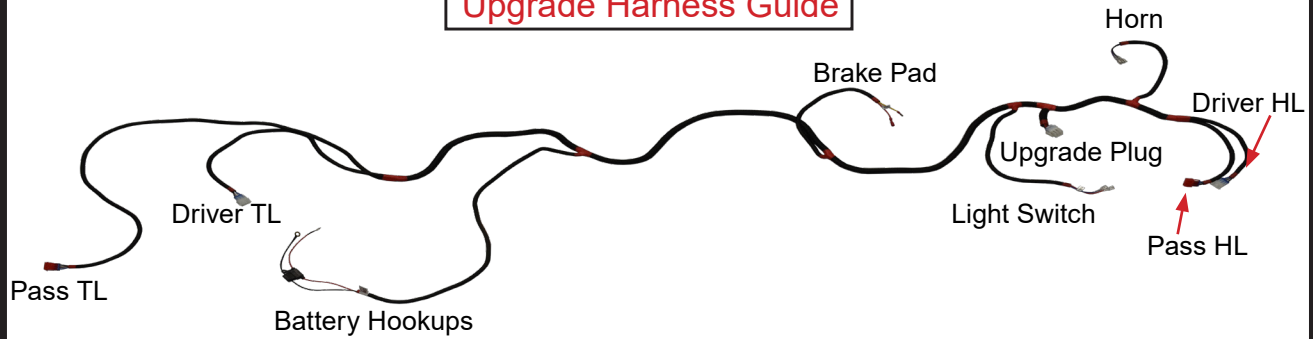
Upgrade Ready  
Harness



Light Switch



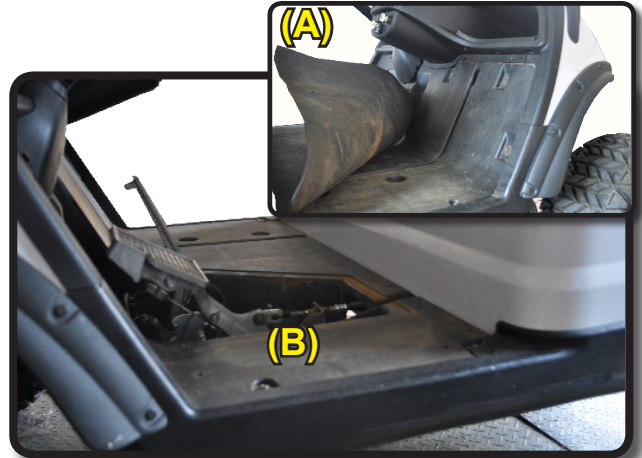
## Upgrade Harness Guide



Tools Required: Rivet Removal Tool

**A)** Remove and retain all plastic rivets from floor mat. Temporarily remove floor mat.

**B)** Temporarily remove pedal cover from floor to expose pedal assembly.



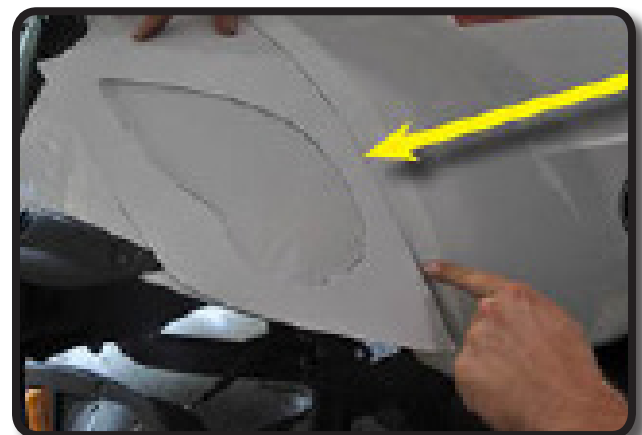
Route **Upgrade Harness** through pedal assembly to the headlight and tail light mounting locations. Route front of harness up to the dash to attach **Light Switch** later.

**IMPORTANT:** Route harness to prevent it from rubbing against or being pinched by moving parts. When routing the harness to the rear of the vehicle, tuck the harness into the routing well that runs into the battery compartment and use opening in the front of the battery compartment.



Tools Required: Scissors, Tape, Marking Pen

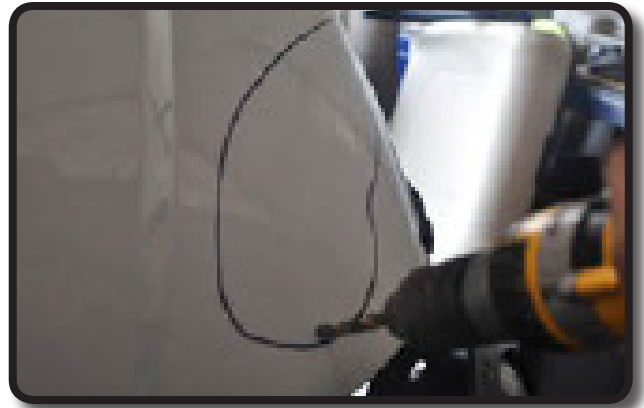
Using the instructions on the included headlight template, cut out the template. Align template to front cowling contour using the lower edge of the cowling as shown. Trace the inside of the cutout to mark the headlight position using a marking pen. Once driver side cutout is traced, flip the template over and mark the passenger side.



 Rotary Cutting Tool, 15/32" Drill Bit

Drill pilot holes on the **INSIDE** of the marked line as shown. Cut out headlight holes using a cutting tool and clean the inside edge with a piece of sandpaper.


**IMPORTANT:** Cut the cowling to the inside of the mark first and trim more if needed.



Place headlight assemblies into cutouts and attach to wiring harness. Fasten headlight assemblies to cowling using the supplied screws.

**NOTE:** Red 3 Pin connector's are for passenger side lights.



 Rotary Cutting Tool, 15/32" Drill Bit

Mark the rear cowling using the supplied template. Align the template to outermost of the edge closest to the vehicle's center, as shown. Drill a pilot hole and cutout tail light holes using a cutting tool.

**IMPORTANT:** As you approach the top of the cut, reduce the depth of the cutting tool to prevent cutting into the fender well.





 #2 Phillips Tip

Route wiring harness behind rear fender wells. Connect tail light to wiring harness and mount to body using supplied screws.



Secure the wiring harness to the vehicle's main wiring harness in pedal assembly area using the supplied zip ties as shown.

**IMPORTANT:** Secure harness to the frame to prevent it from being pinched by moving parts, such as the suspension.



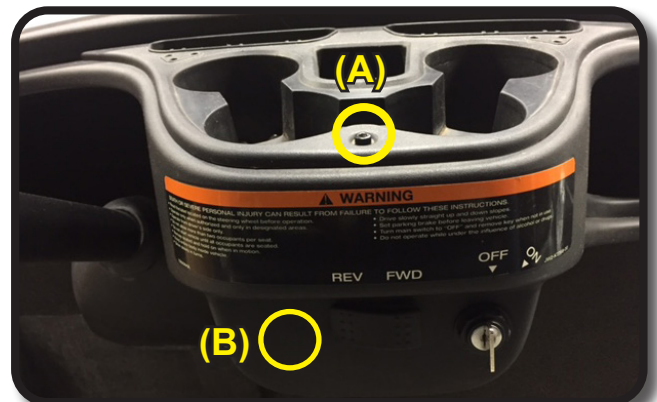
Tie the wiring harness to the main harness at the back of the battery compartment as shown.



 3mm Allen Wrench

**A)** Remove and retain front bolt of cup holders. To access dash, pull up at front of cup holders to release tabs along back edge.

**B)** Using a 15/32" drill bit, drill out the hole for the rocker switch.



Push switch into hole and tighten with mounting nut from back of switch.

Attach Blue and Red wires to male spade terminals on **Light Switch**, there is no orientation for wire connections.

Reattach dashboard using hardware retained from Step 11.

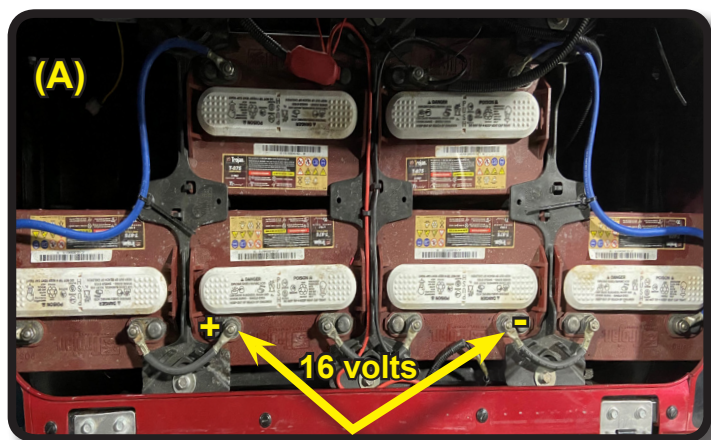


### Battery Pack Connections

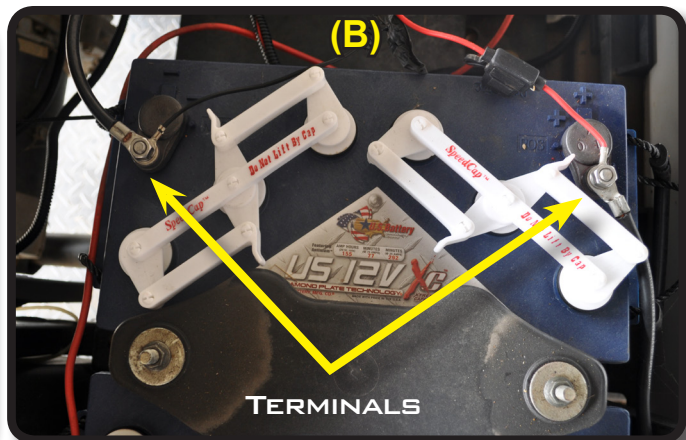
**IMPORTANT:** The cart's battery pack configuration will determine how the wiring harness is connected to the battery pack.

**A)** If your cart is equipped with **SIX 8V** batteries, it's recommended to use a 16 to 12 voltage reducer. In this case, you will connect the voltage reducer across **TWO** of the 8V batteries, and then connect the wiring harness to the appropriate connections on your 16-12 voltage reducer.

**B)** If your cart is equipped with **FOUR 12V** batteries, connect the wiring harness across one battery as shown below.



Yamaha® Drive® with six 8V Battery Configuration



Yamaha® Drive® with four 12V Battery Configuration

**INSTALLATION COMPLETE**