

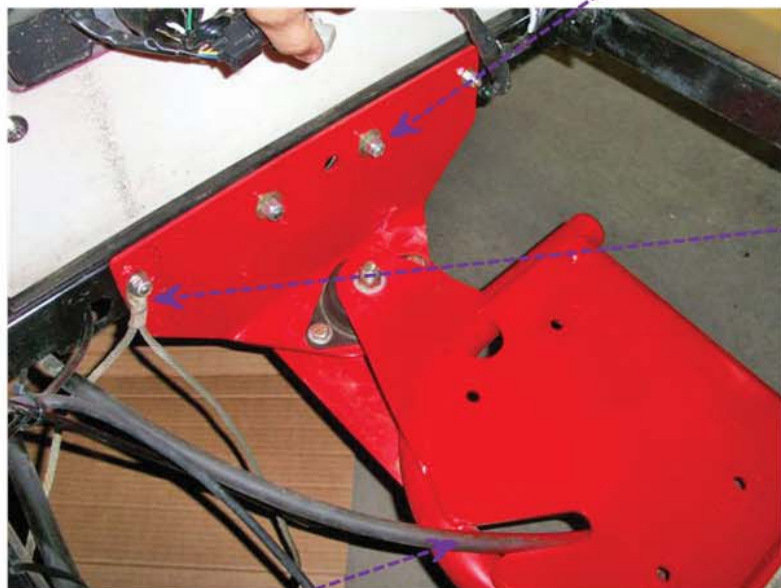
## Jake's Big Block Conversion Kit (P/N 7204)

Before beginning be sure to read and understand the instructions. This kit is designed to give you maximum torque for those extreme off-road conditions. We thank you for your purchase of Jake's Big Block and hope you enjoy the raw power it will provide!



**Caution:** wear appropriate eye protection during the install. Make sure the car is supported by proper use of jack stands. Heavy lifting should be done with proper lifting equipment to prevent any injury.

- 1) Disconnect the battery and all electrical wiring. This means all wiring from dash, foot pedal box and all other components on the car.
- 2) Remove fuel lines and cap them off to prevent leakage. Remove exhaust, throttle/choke cables and air cleaner assembly. Remove drive belt and all engine mounting bolts.
- 3) Lift engine out of compartment being careful not to bump the rear body or other components in the car.
- 4) Place engine bracket into compartment and bolt to existing holes.



Brake Cable

Bracket placement into car. Take time to route the brake cable through the bracket hole. Connect ground cable to front drivers side bolt.



5) Set the engine in place and install mounting bolts.

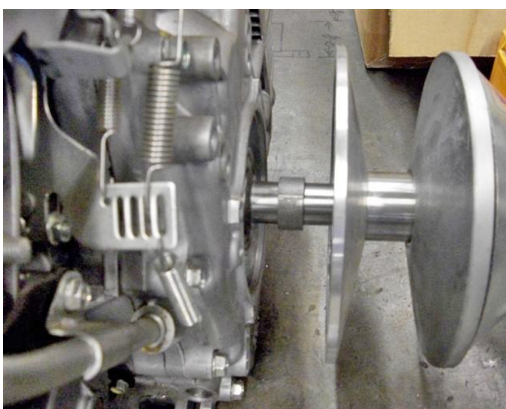
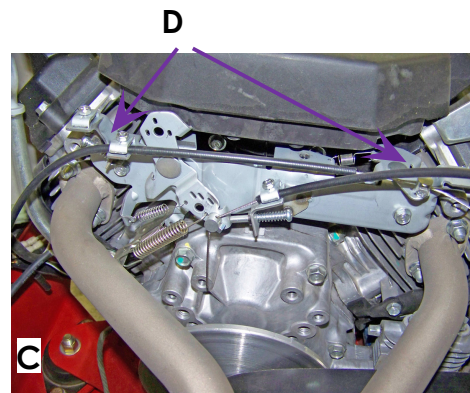
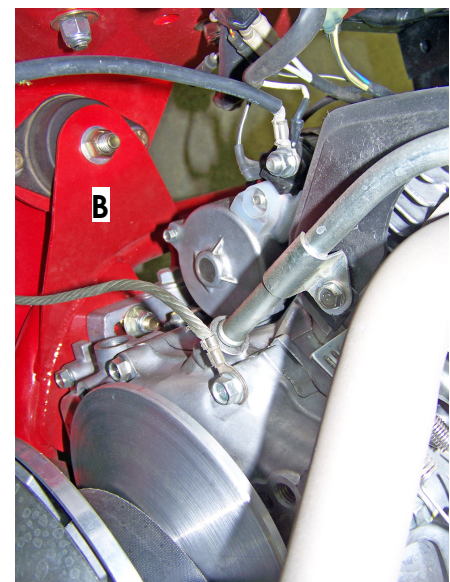
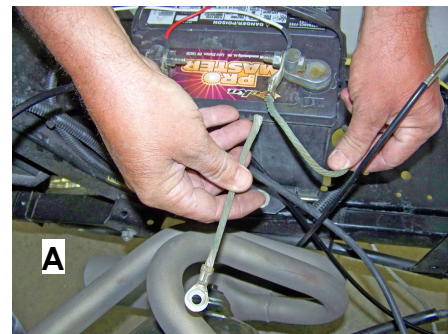
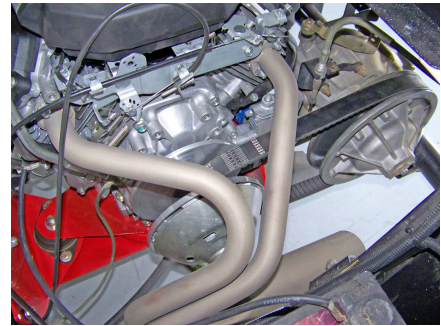
**Tech Tip:** Install 5/8" spacer onto crankshaft then install clutch to engine before mounting onto engine mounting plate. Torque the 3/8" - 24 mounting bolt to 45~50 foot pounds.

6) Install the header and drive belt.

7) Cut the short ground cable and install ground to engine. Connect positive battery cable to starter (A,B).

8) Connect choke cable and throttle cable. See page three for throttle cable adjustment (C) .

9) Slide choke cable through clamp and into the wire end clamp. Adjust cable pull to a position of full movement in and full choke pulled out (D).

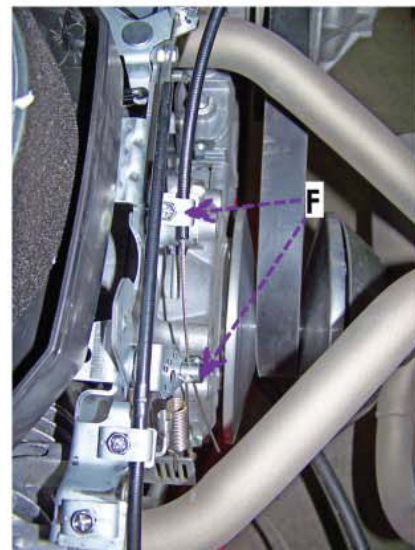


**Tech Tip: Spacer Location**

10) Remove old throttle cable and install new one. Raise floor mat and accelerator box cover (E). Route the cable to where it does not interfere with any moving parts.



11) Install cable into the cable clamp and wire clamp (F).



12) Adjust as follows:

Hold accelerator pedal to the floor. Slide cable forward just enough to clamp into place. Tighten the wire end clamp. Let off pedal and you should see a return to idle position. Press the pedal to floor board and check for full throttle opening. If you do not see full throttle then loosen cable clamp and pull it back just enough to achieve full throttle. You will have sort of a balancing act between full throttle and idle. Make sure you take the time to get that balance point. Failure to do so will be loss of full power, speed and idle. Final idle adjust is located under the air cleaner assembly. Governed rpm should be 3600 for good results.

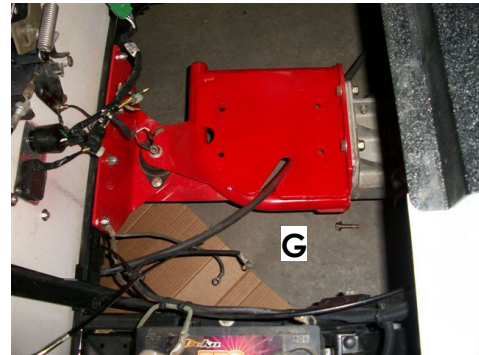


**Note: warranty is void if governor or rpm limiter is disconnected or by-passed in any way!**

**Move Cable In Or Out For Final Adjustment**

**Wiring:**

**13) Use provided template to cut key switch plate hole. Mount key switch plate to body and connect wiring plugs to regulator and engine plugs (G).**



**14) Mount regulator in the area shown. Drill hole for mounting.**



**15) Tie up all loose wires to prevent damage or vibration.**



**Indemnification And Insurance Agreement**

High Performance Enhancement Kit purchaser assumes sole and entire responsibility for, and shall indemnify and save harmless Nivel LLC, from any and all claim, liability, responsibility, and persons or property that may be sustained in connection with the use of any product before or after purchase, including but not limited to high performance enhancement engines. The High Performance Enhancement Kit purchaser also shall indemnify Nivel LLC with respect to any and all liability that may be incurred. Golf Cars are recommended for use only by those aged 16 and older. Golf Cars can be especially hazardous to operate. Always remember that riding and alcohol/drugs don't mix. Never ride on public roads. Never carry more than two passengers (except shuttles and trams). Never engage in stunt driving. Avoid excessive speeds and be particularly careful on difficult terrain. Nivel LLC reserves the right, at any time, to discontinue or change specifications, prices, designs, features, models, or equipment without notice and without incurring any obligation.



## Addendum Throttle/Choke Cable Mounting Bracket

- 1) Remove Key Switch/Throttle assembly (A) and remove all components. Mount the components onto supplied Jake's body plate.



- 2) Mount Jake's key switch body plate to car.

- 3) Remove Throttle/Choke grouping.

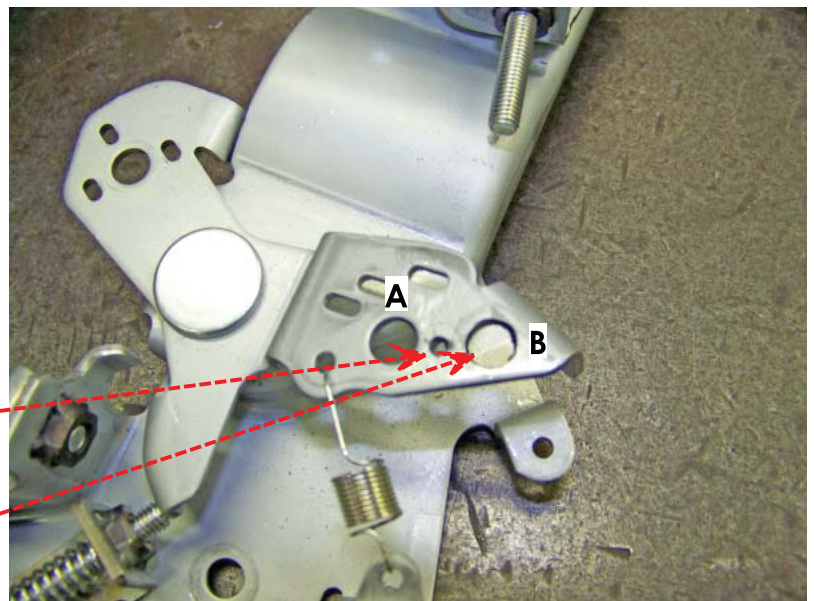


- 4) Relocate cable clamp from position A to position B. Relocate governor spring to new hole position.

Note: see main instructions for cable adjustment.

Drill 3/32" Hole  
For Spring

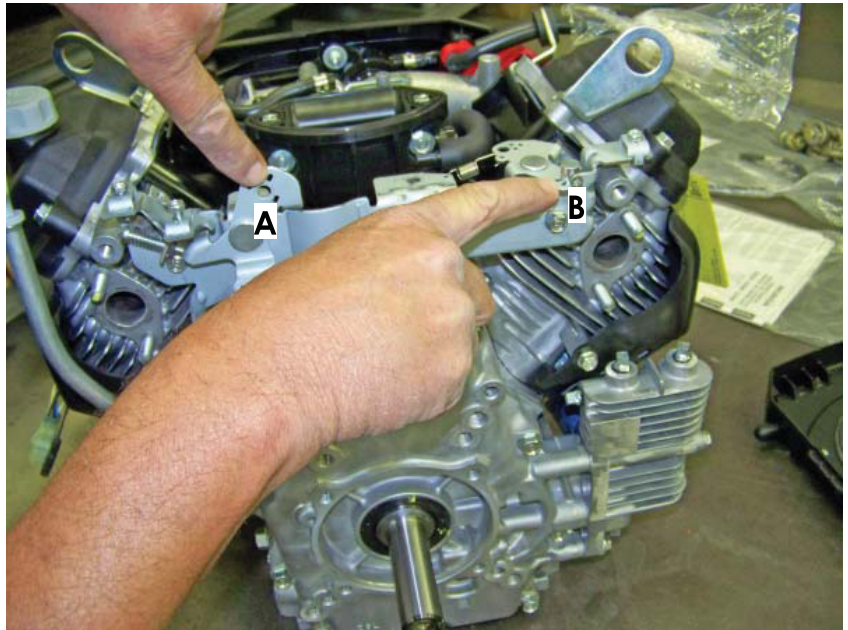
Drill 9/32" Hole



**Addendum Two:**

**5) Move Choke cable clamp from position (A) to position (B).**

**Note: see main instructions for choke cable adjustment.**



**Throttle Cable Cutting:**

**A) Cut cable as close to crimp at threaded rod end. Pull cable out from other end of cable housing before cutting cable housing! You will need an approximate 5" of exposed cable to work with.**

**B) With cable pulled back far enough into housing cut metal thread mount off. You should now see approximately 5" of cable after you push cable back.**



**Note: use this same method for cutting choke cable.**

**Approximately 5" of exposed cable.**



## Safety:

A word about safety using this product. In this kit you are supplied with a yellow warning label that is to be installed on the steering column or highly visible place for operator.



We highly advise this product to be used with the following guide lines:

- 1) This power kit is designed not to exceed 23 mph, any modifications that allow the car to exceed 23 mph will void warranty!
- 2) Do not use on excessive inclines (hills) (we recommend a maximum of 12 degrees)!
- 3) Do not perform hard acceleration on up-hill conditions!
- 4) Do not drive on side hill inclines exceeding 12 degrees!
- 5) Perform safety check list before each usage!  
Includes: brakes, steering, tires/wheels, engine performance, governor, accelerator, drive train and associated parts, frame and body parts, seat belts, transmission (and any associated part).
- 6) Always wear appropriate head gear!
- 7) Do not carry more than two passengers in off-road conditions!
- 8) If drive belt becomes wet you must dry it before continuing!
- 9) Do not perform stunt driving!
- 10) Do not submerge engine in mud or water!

**Tech Tip: Under extreme dirty conditions change engine oil and air filter more often.**

**Product Not For Sale In State Of California**

