

BSG EZ2 CHR EZGO STAINLESS STEEL BRUSH GUARD INSTALLATION INSTRUCTIONS

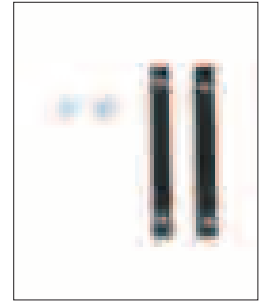
As with any installation make sure you lay out all the parts in an organized manner. Familiarize yourself with the parts and the location they will be installed. You will notice a hardware package of (2) 5/16" bolts x 2-3/4" long, (2) 5/16" bolts 3" long and (4) 5/16" bolts 3/4" long. There will also be (8) 5/16" nuts (Fig. A). This kit is based on the fact that you have an existing top with a front top support. If you do not have the top and front top support, you will need the additional (2) spacers

Part # HDW EZ0 KC 75048 (Fig. B).

Make sure you are wearing eye protection such as glasses or goggles. You will need a 1/2" socket and a 1/2" combination wrench to install the new BSG EZ2 CHR Brush Guard (Fig. C). Remove the existing top support bolts from body and discard (Fig. D). Retain the 1/2" round spacers. It will be necessary to tap the existing holes with a 5/16" x 18 tap for the new longer bolts to fit. Screw the 2-3/4" bolt into the bottom hole and as you screw the 3" bolt into the top hole making sure the round spacer is in place. At this time completely tighten the bottom bolt. As you tighten the top bolt, make sure the brush guard support arm is in place and then tighten the upper bolt completely. You can now install the 5/16" nuts to the support arm and tighten completely. Use the same procedure for both sides (Fig. E). Install the Brush Guard with the flats on the outside of the support arms using the new 5/16" x 3/4" bolts and nuts (Fig. F). Notice that the Support Arm holes are slotted; the slotting is used to adjust the Brush Guard to the Front Body.



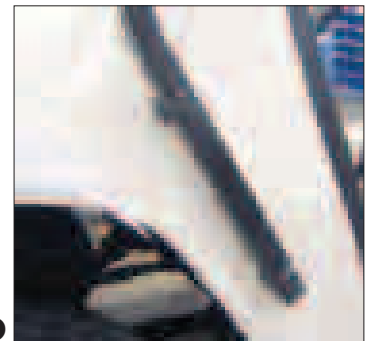
A



B



C



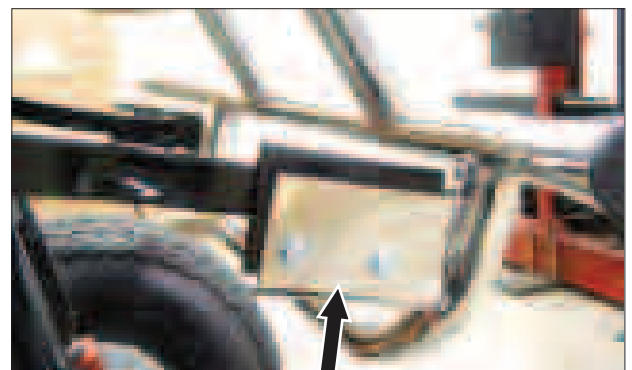
D



E



Brush Guard Installed



F

Flats on the Outside of the Support Arms